



US007917645B2

(12) **United States Patent**
Ikezoye et al.

(10) **Patent No.:** **US 7,917,645 B2**
(45) **Date of Patent:** ***Mar. 29, 2011**

(54) **METHOD AND APPARATUS FOR IDENTIFYING MEDIA CONTENT PRESENTED ON A MEDIA PLAYING DEVICE**

4,449,249 A 5/1984 Price
4,450,531 A 5/1984 Kenyon
4,454,594 A 6/1984 Hefron et al.
4,677,455 A 6/1987 Okajima
4,677,466 A 6/1987 Lert, Jr. et al.
4,739,398 A 4/1988 Thomas et al.

(75) Inventors: **Vance E. Ikezoye**, Los Gatos, CA (US);
James B. Schrempp, Saratoga, CA (US)

(Continued)

(73) Assignee: **Audible Magic Corporation**, Los Gatos, CA (US)

FOREIGN PATENT DOCUMENTS

EP 0349106 A1 1/1990

(*) Notice: Subject to any disclaimer, the term of this patent is extended or adjusted under 35 U.S.C. 154(b) by 89 days.

(Continued)

This patent is subject to a terminal disclaimer.

OTHER PUBLICATIONS

Baum, L., et al., "A Maximization Technique Occurring in the Statistical Analysis of Probabilistic Functions of Markov Chains," *The Annals of Mathematical Statistics*, vol. 41, No. 1, pp. 164-171, 1970.

(21) Appl. No.: **12/251,404**

(Continued)

(22) Filed: **Oct. 14, 2008**

Prior Publication Data

US 2009/0043870 A1 Feb. 12, 2009

Primary Examiner — Phuoc Nguyen

(74) *Attorney, Agent, or Firm* — Blakely, Sokoloff, Taylor & Zafman LLP

Related U.S. Application Data

(63) Continuation of application No. 10/955,841, filed on Sep. 29, 2004, now Pat. No. 7,500,007, which is a continuation of application No. 09/511,632, filed on Feb. 17, 2000, now Pat. No. 6,834,308.

(51) **Int. Cl.**
G06F 15/16 (2006.01)

(52) **U.S. Cl.** **709/231; 709/203; 709/217**

(58) **Field of Classification Search** **709/203, 709/217, 229, 231**

See application file for complete search history.

References Cited

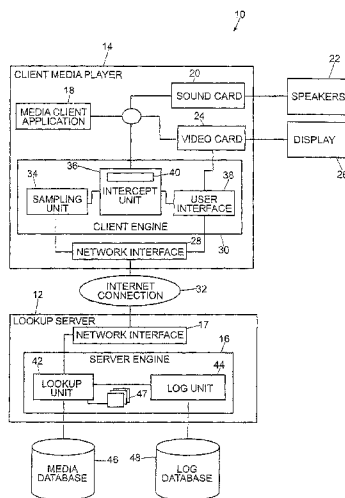
U.S. PATENT DOCUMENTS

3,919,479 A 11/1975 Moon et al.
4,230,990 A 10/1980 Lert, Jr. et al.

(57) **ABSTRACT**

A system and method for identifying media content presented over a media playing device. The media content, such as audio and/or video, is either available digitally or digitally sampled. The media content is sampled to generate a media sample or analytical representation of the media content. The media sample is compared to a collection of sampled (or represented) media content to identify it and to ascertain information related to the sample. This media content-related information is then presented to the user via a display means on the media player. The media player then presents the user specific and related actions that are based upon the information presented and allows the user to directly execute their choice of actions.

30 Claims, 5 Drawing Sheets



U.S. PATENT DOCUMENTS							
			7,181,398	B2	2/2007	Thong et al.	
			7,266,645	B2	9/2007	Garg et al.	
4,843,562	A	6/1989	Kenyon et al.				
4,918,730	A	4/1990	Schulze				
5,210,820	A	5/1993	Kenyon				
5,283,819	A	2/1994	Glick				
5,327,521	A	7/1994	Savic et al.				
5,437,050	A	7/1995	Lamb et al.				
5,442,645	A	8/1995	Ugon				
5,504,518	A	4/1996	Ellis				
5,581,658	A	12/1996	O'Hagan et al.				
5,588,119	A	12/1996	Vincent				
5,612,974	A	3/1997	Astrachan				
5,613,004	A	3/1997	Cooperman et al.	2001/0013061	A1	8/2001	DeMartin
5,638,443	A	6/1997	Stefik	2001/0027522	A1	10/2001	Saito
5,692,213	A	11/1997	Goldberg et al.	2001/0034219	A1	10/2001	Hewitt et al.
5,701,452	A	12/1997	Siefert	2001/0037304	A1	11/2001	Paiz
5,710,916	A	1/1998	Barbara et al.	2001/0056430	A1	12/2001	Yankowski
5,724,605	A	3/1998	Wissner	2002/0049760	A1	4/2002	Scott
5,732,193	A	3/1998	Aberson	2002/0064149	A1	5/2002	Elliott et al.
5,850,388	A	12/1998	Anderson	2002/0082999	A1	6/2002	Lee
5,918,223	A	* 6/1999	Blum et al. 1/1	2002/0087885	A1	7/2002	Peled et al.
5,924,071	A	7/1999	Morgan et al.	2002/0120577	A1	8/2002	Hans et al.
5,930,369	A	7/1999	Cox et al.	2002/0123990	A1	9/2002	Abe et al.
5,943,422	A	8/1999	Van Wie et al.	2002/0129140	A1	9/2002	Peled et al.
5,949,885	A	9/1999	Leighton	2002/0133494	A1	9/2002	Goedken
5,959,659	A	9/1999	Dokic	2002/0152262	A1	10/2002	Arkin et al.
5,983,176	A	11/1999	Hoffert et al.	2002/0156737	A1	10/2002	Kahn
6,006,183	A	12/1999	Lai et al.	2002/0158737	A1	10/2002	Yokoyama
6,006,256	A	12/1999	Zdepski et al.	2002/0186887	A1	12/2002	Rhoads
6,011,758	A	1/2000	Dockes	2002/0198789	A1	12/2002	Waldman
6,026,439	A	2/2000	Chowdhury	2003/0014530	A1	1/2003	Bodin
6,044,402	A	3/2000	Jacobson	2003/0018709	A1	1/2003	Schrempp et al.
6,067,369	A	5/2000	Kamei	2003/0023852	A1	1/2003	Wold
6,088,455	A	7/2000	Logan	2003/0033321	A1	2/2003	Schrempp et al.
6,092,040	A	7/2000	Voran	2003/0037010	A1	2/2003	Schmelzer et al.
6,096,961	A	8/2000	Bruti	2003/0051100	A1	3/2003	Patel
6,118,450	A	9/2000	Proehl et al.	2003/0061352	A1	3/2003	Bohrer
6,192,340	B1	2/2001	Abecassis	2003/0061490	A1	3/2003	Abajian
6,195,693	B1	2/2001	Berry	2003/0095660	A1	5/2003	Lee et al.
6,243,615	B1	6/2001	Neway	2003/0135623	A1	7/2003	Schrempp et al.
6,243,725	B1	6/2001	Hempleman et al.	2003/0191719	A1	10/2003	Ginter et al.
6,253,193	B1	6/2001	Ginter	2003/0195852	A1	10/2003	Campbell et al.
6,253,337	B1	6/2001	Maloney et al.	2004/0008864	A1	1/2004	Watson et al.
6,279,010	B1	8/2001	Anderson	2004/0010495	A1	1/2004	Kramer et al.
6,279,124	B1	8/2001	Brouwer et al.	2004/0053654	A1	3/2004	Kokumai et al.
6,285,596	B1	9/2001	Miura et al.	2004/0073513	A1	4/2004	Stefik et al.
6,330,593	B1	* 12/2001	Roberts et al. 709/217	2004/0089142	A1	5/2004	Georges et al.
6,345,256	B1	2/2002	Milsted et al.	2004/0133797	A1	7/2004	Arnold
6,374,260	B1	4/2002	Hoffert et al.	2004/0148191	A1	7/2004	Hoke, Jr.
6,385,596	B1	5/2002	Wiser	2004/0163106	A1	8/2004	Schrempp et al.
6,418,421	B1	7/2002	Hurtado et al.	2004/0167858	A1	8/2004	Erickson
6,422,061	B1	7/2002	Sunshine	2004/0201784	A9	10/2004	Dagtas et al.
6,438,556	B1	8/2002	Malik et al.	2005/0021783	A1	1/2005	Ishii
6,449,226	B1	9/2002	Kumagai	2005/0039000	A1	2/2005	Erickson
6,452,874	B1	9/2002	Otsuka et al.	2005/0044189	A1	2/2005	Ikezoye et al.
6,453,252	B1	9/2002	Laroche	2005/0097059	A1	5/2005	Shuster
6,460,050	B1	10/2002	Pace et al.	2005/0154678	A1	7/2005	Schmelzer
6,463,508	B1	10/2002	Wolf et al.	2005/0154680	A1	7/2005	Schmelzer
6,477,704	B1	11/2002	Cremia	2005/0154681	A1	7/2005	Schmelzer
6,487,641	B1	11/2002	Cusson et al.	2005/0216433	A1	9/2005	Bland et al.
6,490,279	B1	12/2002	Chen et al.	2005/0267945	A1	12/2005	Cohen et al.
6,496,802	B1	12/2002	van Zoest et al.	2005/0289065	A1	12/2005	Weare
6,526,411	B1	2/2003	Ward	2006/0034177	A1	2/2006	Schrempp
6,542,869	B1	4/2003	Foote	2006/0062426	A1	3/2006	Levy et al.
6,550,001	B1	4/2003	Corwin et al.	2007/0074147	A1	3/2007	Wold
6,550,011	B1	4/2003	Sims, III	2007/0078769	A1	4/2007	Way et al.
6,591,245	B1	7/2003	Klug	2008/0008173	A1	1/2008	Kanevsky et al.
6,609,093	B1	8/2003	Gopinath et al.	2008/0133415	A1	6/2008	Ginter et al.
6,609,105	B2	8/2003	van Zoest et al.	2008/0141379	A1	6/2008	Schmelzer
6,628,737	B1	9/2003	Bogdan	2008/0154730	A1	6/2008	Schmelzer
6,636,965	B1	10/2003	Beyda	2008/0155116	A1	6/2008	Schmelzer
6,654,757	B1	11/2003	Stern	2009/0030651	A1	1/2009	Wold
6,732,180	B1	5/2004	Hale	2009/0031326	A1	1/2009	Wold
6,771,885	B1	8/2004	Agnihotri et al.	2009/0192640	A1	7/2009	Wold
6,834,308	B1	12/2004	Ikezoye	2009/0240361	A1	9/2009	Wold et al.
6,947,909	B1	9/2005	Hoke, Jr.	2009/0328236	A1	12/2009	Schmelzer
6,968,337	B2	11/2005	Wold				
7,043,536	B1	5/2006	Philyaw				
7,058,223	B2	6/2006	Cox et al.				

FOREIGN PATENT DOCUMENTS

EP	0402210	A1	6/1990
EP	0517405	A2	5/1992
EP	0689316	A2	12/1995
EP	0731446		9/1996
EP	0859503		8/1998
EP	0459046		4/1999
EP	1354276	B1	12/2007
EP	1485815	B1	10/2009
WO	WO 96/36163	A3	11/1996
WO	WO 98/20672	A3	5/1998
WO	WO 00/05650	A1	2/2000
WO	WO 00/39954	A1	7/2000
WO	WO 00/63800	A1	10/2000
WO	WO 01/23981	A1	4/2001
WO	WO 01/62004		8/2001
WO	WO 02/03203		1/2002
WO	WO 02/15035	A2	2/2002
WO	WO 02/37316	A3	5/2002
WO	WO 02/082271	A1	10/2002
WO	WO 03/007235	A1	1/2003
WO	WO 03/009149	A1	1/2003
WO	WO 03/036496	A1	5/2003
WO	WO 03/067459	A1	8/2003
WO	WO 03/091990	A1	11/2003
WO	WO 2004/044820	A1	5/2004
WO	WO 2004/070558	A2	8/2004
WO	WO 2006/015168	A2	2/2006
WO	WO 2009/017710		2/2009

OTHER PUBLICATIONS

- Beritelli, F., et al., "Multilayer Chaotic Encryption for Secure Communications in packet switching Networks," IEEE, vol. Aug. 2, 2000, pp. 1575-1582.
- Blum, T., Keislar, D., Wheaton, J., and Wold, E., "Audio Databases with Content-Based Retrieval," Proceedings of the 1995 International Joint Conference on Artificial Intelligence (IJCAI) Workshop on Intelligent Multimedia Information Retrieval, 1995.
- Breslin, Pat, et al., Relatable Website, "Emusic uses Relatable's open source audio recognition solution, TRM, to signature its music catablog for MusicBrainz database," <http://www.relatable.com/news/pressrelease/001017.release.html>, Oct. 17, 2000.
- Cosi, P., De Poli, G., Prandoni, P., "Timbre Characterization with Mel-Cepstrum and Neural Nets," Proceedings of the 1994 International Computer Music Conference, pp. 42-45, San Francisco, No date.
- Dempster, A.P., et al., "Maximum Likelihood from Incomplete Data via the EM Algorithm" *Journal of the Royal Statistical Society, Series B (Methodological)*, vol. 39, Issue 1, pp. 31-38, 1977.
- Feiten, B. and Gunzel, S., "Automatic Indexing of a Sound Database Using Self-Organizing Neural Nets," *Computer Music Journal*, 18:3, pp. 53-65, Fall 1994.
- Fischer, S., Lienhart, R., and Effelsberg, W., "Automatic Recognition of Film Genres," *Reihe Informatik*, Jun. 1995, Universitat Mannheim, Praktische Informatik IV, L15, 16, D-68131 Mannheim.
- Foote, J., "A Similarity Measure for Automatic Audio Classification," Institute of Systems Science, National University of Singapore, 1977, Singapore.
- Gonzalez, R. and Melih, K., "Content Based Retrieval of Audio," The Institute for Telecommunication Research, University of Wollongong, Australia, No date.
- Haitsma, J., et al., "Robust Audio Hashing for Content Identification", CBMI 2001, Second International Workshop on Content Based Multimedia and Indexing, Brescia, Italy, Sep. 19-21, 2001.
- Kanth, K.V. et al. "Dimensionality Reduction or Similarity Searching in Databases," *Computer Vision and Image understanding*, vol. 75, Nos. 1/2 Jul./Aug. 1999, pp. 59-72, Academic Press. Santa Barbara, CA, USA.
- Keislar, D., Blum, T., Wheaton, J., and Wold, E., "Audio Analysis for Content-Based Retrieval" Proceedings of the 1995 International Computer Music Conference.
- Ohtsuki, K., et al., "Topic extraction based on continuous speech recognition in broadcast-news speech," Proceedings IEEE Workshop on Automated Speech Recognition and Understanding, 1997, pp. 527-534, N.Y., N.Y., USA.
- Packethound Tech Specs, www.palidesys.com/products/packethound/tck_specs/prod_Phtechspecs.shtml, 2002.
- "How does PacketHound work?", www.palidesys.com/products/packethound/how_does_it_work/prod_Pghhow.shtml 2002.
- Pellom, B. et al., "Fast Likelihood Computation Techniques in Nearest-Neighbor search for Continuous Speech Recognition," *IEEE Signal Processing Letters*, vol. 8, pp. 221-224 Aug. 2001.
- Reynolds, D., et al., "Robust Text-Independent Speaker Identification Using Gaussian Mixture Speaker Models", *IEEE Transactions on Speech and Audio Processing*, vol. 3, No. 1, pp. 72-83 Jan. 1995.
- Scheirer, E., Slaney, M., "Construction and Evaluation of a Robust Multifeature Speech/Music Discriminator," pp. 1-4, Proceedings of ICASSP-97, Apr. 2-24, Munich, Germany.
- Scheirer, E.D., "Tempo and Beat Analysis of Acoustic Musical Signals," Machine Listening Group, E15-401D MIT Media Laboratory, pp. 1-21, Aug. 8, 1997, Cambridge, MA.
- Smith, Alan J., "Cache Memories," *Computer Surveys*, Sep. 1982, University of California, Berkeley, California, vol. 14, No. 3, pp. 1-61.
- Vertegaal, R. and Bonis, E., "ISEE: An Intuitive Sound Editing Environment," *Computer Music Journal*, 18:2, pp. 21-22, Summer 1994.
- Wang, Yao, et al., "Multimedia Content Analysis," *IEEE Signal Processing Magazine*, pp. 12-36, Nov. 2000, IEEE Service Center, Piscataway, N.J., USA.
- Wold, Erling, et al., "Content Based Classification, Search and Retrieval of Audio," *IEEE Multimedia*, vol. 3, No. 3, pp. 27-36, 1996 IEEE Service Center, Piscataway, N.J., USA.
- Zawodny, Jeremy, D., "A C Program to Compute CDDDB on Linux and FreeBSD," [internet] <http://jeremy.zawodny.com/c/discid-linux-1.3tar.gz>, 1 page, Apr. 14, 2001, retrieved Jul. 17, 2007.
- European Patent Application No. 02752347.1, Supplementary European Search Report Dated May 8, 2006, 4 pages.
- European Patent Application No. 02756525.8, Supplementary European Search Report Dated Jun. 28, 2006, 4 pages.
- European Patent Application No. 02782170, Supplementary European Search Report Dated Feb. 7, 2007, 4 pages.
- European Patent Application No. 02755522.3, Supplementary European Search Report Dated May 12, 2006, 2 Pages.
- PCT Search Report, PCT/US01/50295, International Search Report dated May 14, 2003, 5 Pages.
- PCT Search Report, PCT/US02/10615, International Search Report dated Aug. 7, 2002, 2 Pages.
- PCT Search Report, PCT/US02/33186, International Search Report dated Dec. 16, 2002, pp. 1-4.
- Audible Magic Office Action for U.S. Appl. No. 09/999,763 mailed Dec. 22, 2008.
- Audible Magic Office Action for U.S. Appl. No. 10/072,238 mailed May 3, 2005.
- Audible Magic Office Action for U.S. Appl. No. 10/072,238 mailed Oct. 25, 2005.
- Audible Magic Office Action for U.S. Appl. No. 10/072,238 mailed Apr. 25, 2006.
- Audible Magic Office Action for U.S. Appl. No. 10/072,238 mailed Sep. 19, 2007.
- Audible Magic Office Action for U.S. Appl. No. 10/072,238 mailed Apr. 7, 2008.
- Audible Magic Office Action for U.S. Appl. No. 10/072,238 mailed Oct. 1, 2008.
- Audible Magic Office Action for U.S. Appl. No. 12/035,599 mailed Nov. 17, 2008.
- Audible Magic Office Action for U.S. Appl. No. 10/356,318 mailed May 24, 2006.
- Audible Magic Office Action for U.S. Appl. No. 10/356,318 mailed Nov. 2, 2006.
- Audible Magic Office Action for U.S. Appl. No. 10/356,318 mailed Apr. 11, 2007.
- Audible Magic Office Action for U.S. Appl. No. 10/356,318 mailed Nov. 1, 2007.
- Audible Magic Office Action for U.S. Appl. No. 10/356,318 mailed May 9, 2008.
- Audible Magic Office Action for U.S. Appl. No. 11/191,493 mailed Jul. 17, 2008.

- Audible Magic Office Action for U.S. Appl. No. 09/511,632 mailed Dec. 4, 2002.
- Audible Magic Office Action for U.S. Appl. No. 09/511,632 mailed May 13, 2003.
- Audible Magic Office Action for U.S. Appl. No. 09/511,632 mailed Aug. 27, 2003.
- Audible Magic Office Action for U.S. Appl. No. 09/511,632 mailed Feb. 5, 2004.
- Audible Magic Notice of Allowance for U.S. Appl. No. 09/511,632 mailed Aug. 10, 2004.
- Audible Magic Notice of Allowance for U.S. Appl. No. 10/955,841 mailed Sep. 25, 2006.
- Audible Magic Notice of Allowance for U.S. Appl. No. 10/955,841 mailed Mar. 23, 2007.
- Audible Magic Notice of Allowance for U.S. Appl. No. 10/955,841 mailed Sep. 11, 2007.
- Audible Magic Notice of Allowance for U.S. Appl. No. 10/955,841 mailed Feb. 25, 2008.
- Audible Magic Office Action for U.S. Appl. No. 08/897,662 mailed Aug. 13, 1998.
- Audible Magic Notice of Allowance for U.S. Appl. No. 08/897,662 mailed Jan. 29, 1999.
- Audible Magic Office Action for U.S. Appl. No. 09/706,227 mailed May 5, 2004.
- Audible Magic Office Action for U.S. Appl. No. 09/706,227 mailed Nov. 12, 2004.
- Audible Magic Office Action for U.S. Appl. No. 09/706,227 mailed May 9, 2005.
- Audible Magic Office Action for U.S. Appl. No. 09/706,227 mailed Nov. 1, 2005.
- Audible Magic Office Action for U.S. Appl. No. 09/706,227 mailed Jun. 23, 2006.
- Audible Magic Office Action for U.S. Appl. No. 09/706,227 mailed Nov. 7, 2006.
- Audible Magic Office Action for U.S. Appl. No. 09/706,227 mailed Mar. 29, 2007.
- Audible Magic Office Action for U.S. Appl. No. 09/706,227 mailed Sep. 17, 2007.
- Audible Magic Office Action for U.S. Appl. No. 09/706,227 mailed May 29, 2008.
- Audible Magic Office Action for U.S. Appl. No. 10/192,783 mailed Dec. 13, 2004.
- Audible Magic Notice of Allowance for U.S. Appl. No. 11/239,543 mailed Apr. 23, 2008.
- Audible Magic Notice of Allowance for U.S. Appl. No. 10/192,783 mailed Jun. 7, 2005.
- Audible Magic Office Action for U.S. Appl. No. 09/910,680 mailed Nov. 17, 2004.
- Audible Magic Office Action for U.S. Appl. No. 09/910,680 mailed May 16, 2005.
- Audible Magic Office Action for U.S. Appl. No. 09/910,680 mailed Sep. 29, 2005.
- Audible Magic Office Action for U.S. Appl. No. 09/910,680 mailed Jun. 23, 2006.
- Audible Magic Office Action for U.S. Appl. No. 09/910,680 mailed Aug. 8, 2006.
- Audible Magic Office Action for U.S. Appl. No. 09/910,680 mailed Jan. 25, 2007.
- Audible Magic Office Action for U.S. Appl. No. 09/910,680 mailed Dec. 5, 2007.
- Audible Magic Office Action for U.S. Appl. No. 09/999,763 mailed Apr. 6, 2005.
- Audible Magic Office Action for U.S. Appl. No. 09/999,763 mailed Oct. 6, 2005.
- Audible Magic Office Action for U.S. Appl. No. 09/999,763 mailed Apr. 7, 2006.
- Audible Magic Office Action for U.S. Appl. No. 09/999,763 mailed Oct. 6, 2006.
- Audible Magic Office Action for U.S. Appl. No. 09/999,763 mailed Mar. 7, 2007.
- Audible Magic Office Action for U.S. Appl. No. 09/999,763 mailed Aug. 20, 2007.
- Audible Magic Office Action for U.S. Appl. No. 09/999,763 mailed Jan. 7, 2008.
- Audible Magic Office Action for U.S. Appl. No. 09/999,763 mailed Jun. 27, 2008.
- Audible Magic Office Action for U.S. Appl. No. 11/116,710 mailed Dec. 13, 2004.
- Audible Magic Office Action for U.S. Appl. No. 11/116,710 mailed Apr. 8, 2005.
- Audible Magic Office Action for U.S. Appl. No. 11/116,710 mailed Oct. 7, 2005.
- Audible Magic Office Action for U.S. Appl. No. 11/116,710 mailed Apr. 20, 2006.
- Audible Magic Office Action for U.S. Appl. No. 11/116,710 mailed Jul. 31, 2006.
- Audible Magic Office Action for U.S. Appl. No. 11/116,710 mailed Jan. 16, 2007.
- Audible Magic Notice of Allowance for U.S. Appl. No. 11/116,710 mailed Nov. 19, 2007.
- Audible Magic Office Action for U.S. Appl. No. 11/048,307 mailed Aug. 22, 2007.
- Audible Magic Office Action for U.S. Appl. No. 11/048,307 mailed May 16, 2008.
- Audible Magic Office Action for U.S. Appl. No. 11/048,308 mailed Feb. 25, 2008.
- Audible Magic Office Action for U.S. Appl. No. 11/048,338 mailed Apr. 18, 2007.
- Audible Magic Office Action for U.S. Appl. No. 11/048,338 mailed Oct. 11, 2007.
- Audible Magic Office Action for U.S. Appl. No. 11/048,338 mailed Jan. 14, 2008.
- Audible Magic Office Action for U.S. Appl. No. 11/048,338 mailed Jul. 9, 2008.
- Business Wire, "Cisco and Fox Host Groundbreaking Screening of Titan A.E.; Animated Epic Will Be First Film Ever to be Digitally Transmitted Over the Internet Monday;" Jun. 5, 2000, 08:14 EDT.
- Business Wire, "IBM: IBM Announces New Descrambler Software; First To Offer Software To Work With Digital Video Chips;" Jun. 5, 25, 1997, 07:49.
- Chen, et al., Yong-Cong, A Secure and Robust Digital Watermarking Technique by the Block Cipher RC6 and Secure Hash Algorithm, Department of Computer Science, National Tsing Hua University, 2001.
- Gasaway Laura, Close of Century Sees New Copyright Amendments, Mar. 200, Information Outlook, 4, 3, 42.
- Harris, Lesley Ellen, "To register or not," Mar. 2006, Information Outlook, 10, 3, 32(s).
- Pankanti, Sharath, "Verification Watermarks on Fingerprint Recognition and Retrieval," Part of IS&T/SPIE Conference on Security and Watermarking of Multimedia Contents, San Jose, CA Jan. 1999, SPIE vol. 3657, pp. 66-78.
- European Patent Application No. 04706547.9 European Search Report Dated Feb. 25, 2010, 3 Pages.
- Audible Magic Office Action for U.S. Appl. No. 09/706,227 mailed Jan. 9, 2009.
- Audible Magic Office Action for U.S. Appl. No. 11/239,543 mailed Apr. 23, 2008.
- Audible Magic Notice of Allowance for U.S. Appl. No. 11/239,543 mailed Nov. 6, 2008.
- Audible Magic Notice of Allowance for U.S. Appl. No. 11/239,543 mailed Feb. 25, 2009.
- Audible Magic Office Action for U.S. Appl. No. 09/999,763 mailed Jul. 20, 2009.
- Audible Magic Office Action for U.S. Appl. No. 09/999,763 mailed Dec. 21, 2009.
- Audible Magic Office Action for U.S. Appl. No. 09/999,763 mailed Jun. 23, 2010.
- Audible Magic Office Action for U.S. Appl. No. 10/072,238 mailed Jan. 9, 2009.
- Audible Magic Office Action for U.S. Appl. No. 10/072,238 mailed Mar. 31, 2009.
- Audible Magic Office Action for U.S. Appl. No. 10/072,238 mailed Aug. 6, 2010.

Audible Magic Notice of Allowance for U.S. Appl. No. 12/042,023 mailed Dec. 29, 2008.
Audible Magic Notice of Allowance for U.S. Appl. No. 12/042,023 mailed Jun. 25, 2009.
Audible Magic Notice of Allowance for U.S. Appl. No. 12/042,023 mailed Mar. 8, 2010.
Audible Magic Notice of Allowance for U.S. Appl. No. 11/048,307 mailed May 29, 2009.
Audible Magic Office Action for U.S. Appl. No. 11/048,308 mailed Mar. 5, 2009.
Audible Magic Notice of Allowance for U.S. Appl. No. 11/048,308 mailed Aug. 7, 2009.
Audible Magic Office Action for U.S. Appl. No. 11/048,338 mailed Jan. 7, 2009.
Audible Magic Office Action for U.S. Appl. No. 11/048,338 mailed Jul. 6, 2009.
Audible Magic Office Action for U.S. Appl. No. 11/048,338 mailed Dec. 28, 2009.
Audible Magic Office Action for U.S. Appl. No. 11/048,338 mailed Jun. 24, 2010.
Audible Magic Office Action for U.S. Appl. No. 12/035,599 mailed May 29, 2009.
Audible Magic Office Action for U.S. Appl. No. 12/035,599 mailed Nov. 24, 2009.
Audible Magic Office Action for U.S. Appl. No. 12/035,599 mailed Jun. 9, 2010.
Audible Magic Office Action for U.S. Appl. No. 12/035,609 mailed Dec. 29, 2008.
Audible Magic Office Action for U.S. Appl. No. 12/035,609 mailed Jun. 24, 2009.
Audible Magic Notice of Allowance for U.S. Appl. No. 12/035,609 mailed Dec. 11, 2009.
Audible Magic Notice of Allowance for U.S. Appl. No. 12/277,291 mailed May 12, 2010.

Audible Magic Office Action for U.S. Appl. No. 10/356,318 mailed Jan. 6, 2009.
Audible Magic Office Action for U.S. Appl. No. 10/356,318 mailed Jun. 15, 2009.
Audible Magic Office Action for U.S. Appl. No. 10/356,318 mailed Jan. 21, 2010.
Audible Magic Office Action for U.S. Appl. No. 11/191,493 mailed Jan. 9, 2009.
Audible Magic Office Action for U.S. Appl. No. 11/191,493 mailed Apr. 28, 2009.
Audible Magic Office Action for U.S. Appl. No. 11/191,493 mailed Nov. 19, 2009.
Audible Magic Office Action for U.S. Appl. No. 11/191,493 mailed May 25, 2010.
Audible Magic Office Action for U.S. Appl. No. 12/410,445 mailed Aug. 10, 2010.
Audible Magic Notice of Allowance for U.S. Appl. No. 12/410,445 mailed Oct. 20, 2010.
Audible Magic Notice of Allowance for U.S. Appl. No. 09/999,763 mailed Sep. 16, 2010.
Audible Magic Notice of Allowance for U.S. Appl. No. 10/072,238 mailed May 3, 2005.
Audible Magic Office Action for U.S. Appl. No. 12/488,504 mailed Nov. 10, 2010.
Audible Magic Office Action for U.S. Appl. No. 10/356,318 mailed Jan. 7, 2011.
Audible Magic Office Action for U.S. Appl. No. 11/191,493 mailed Oct. 4, 2010.
Audible Magic Office Action for U.S. Appl. No. 11/829,662 mailed Oct. 8, 2010.
Audible Magic Office Action for U.S. Appl. No. 11/923,491 mailed Nov. 12, 2010.

* cited by examiner

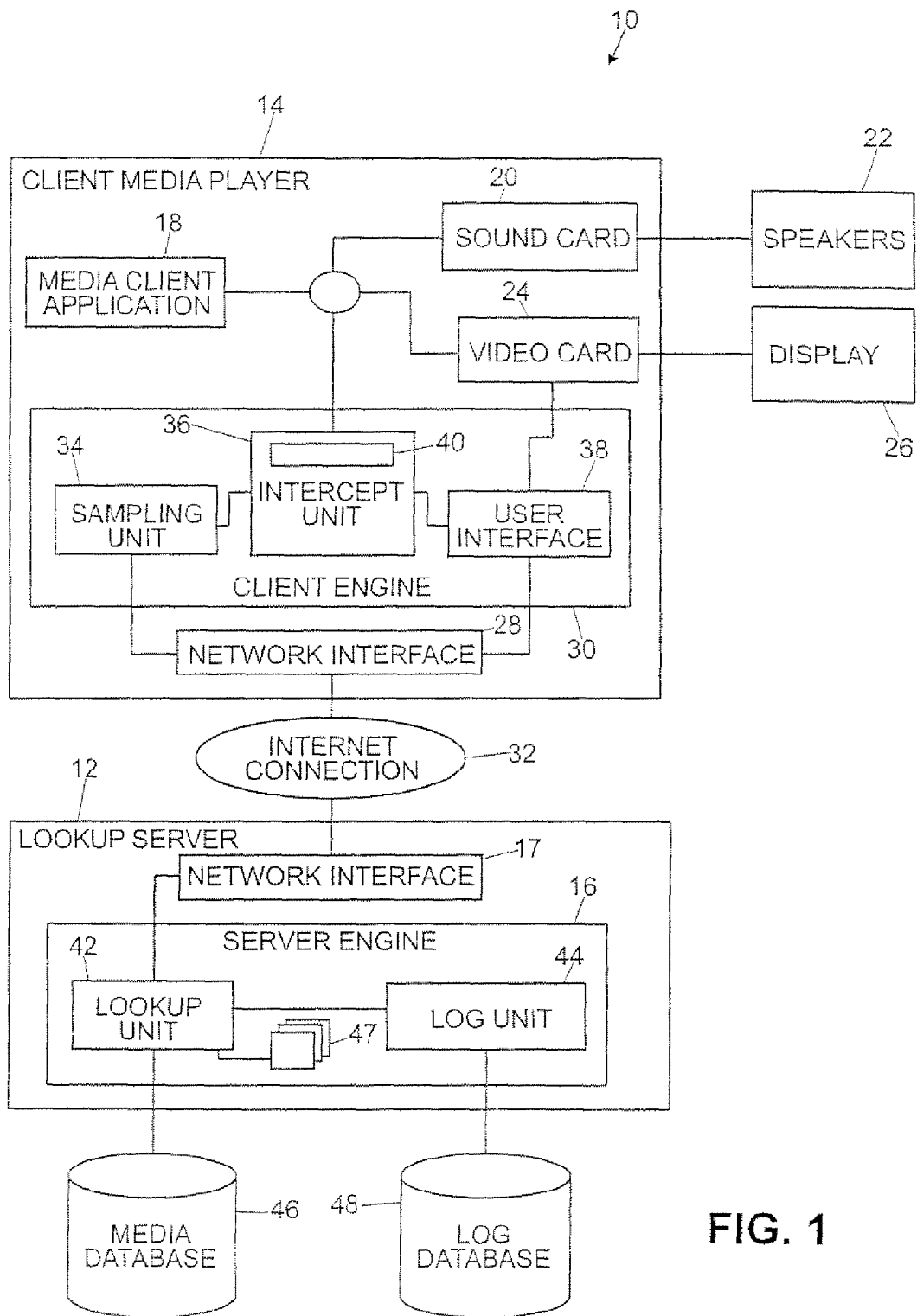


FIG. 1

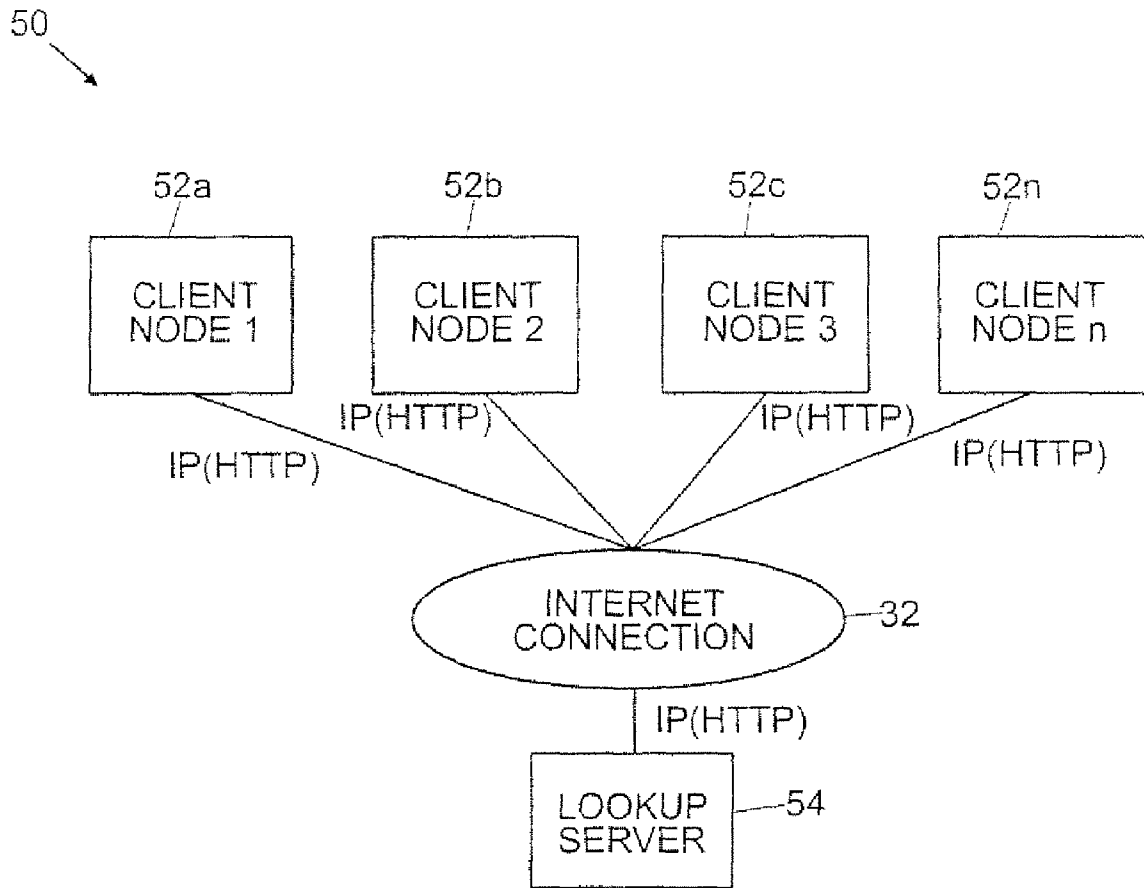


FIG. 2

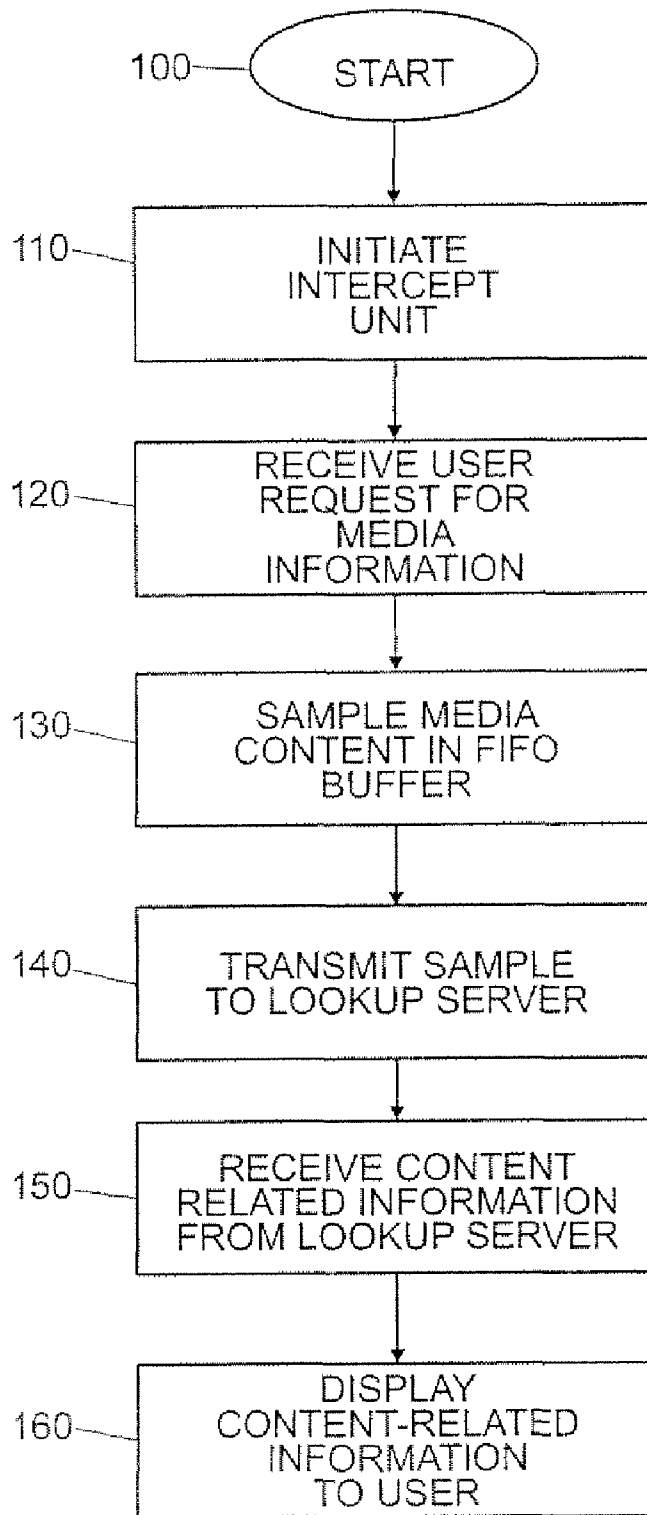


FIG. 3

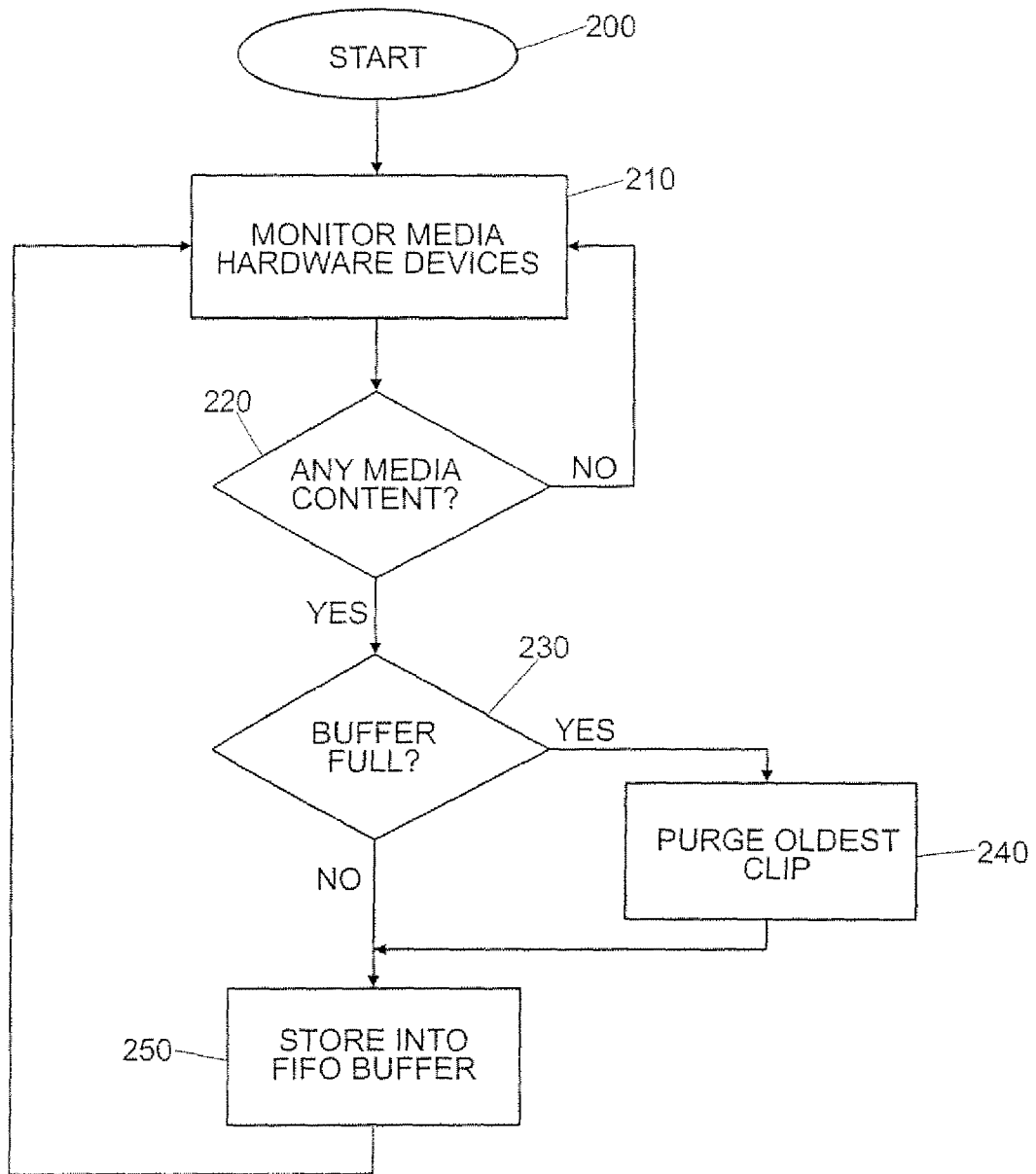


FIG. 4

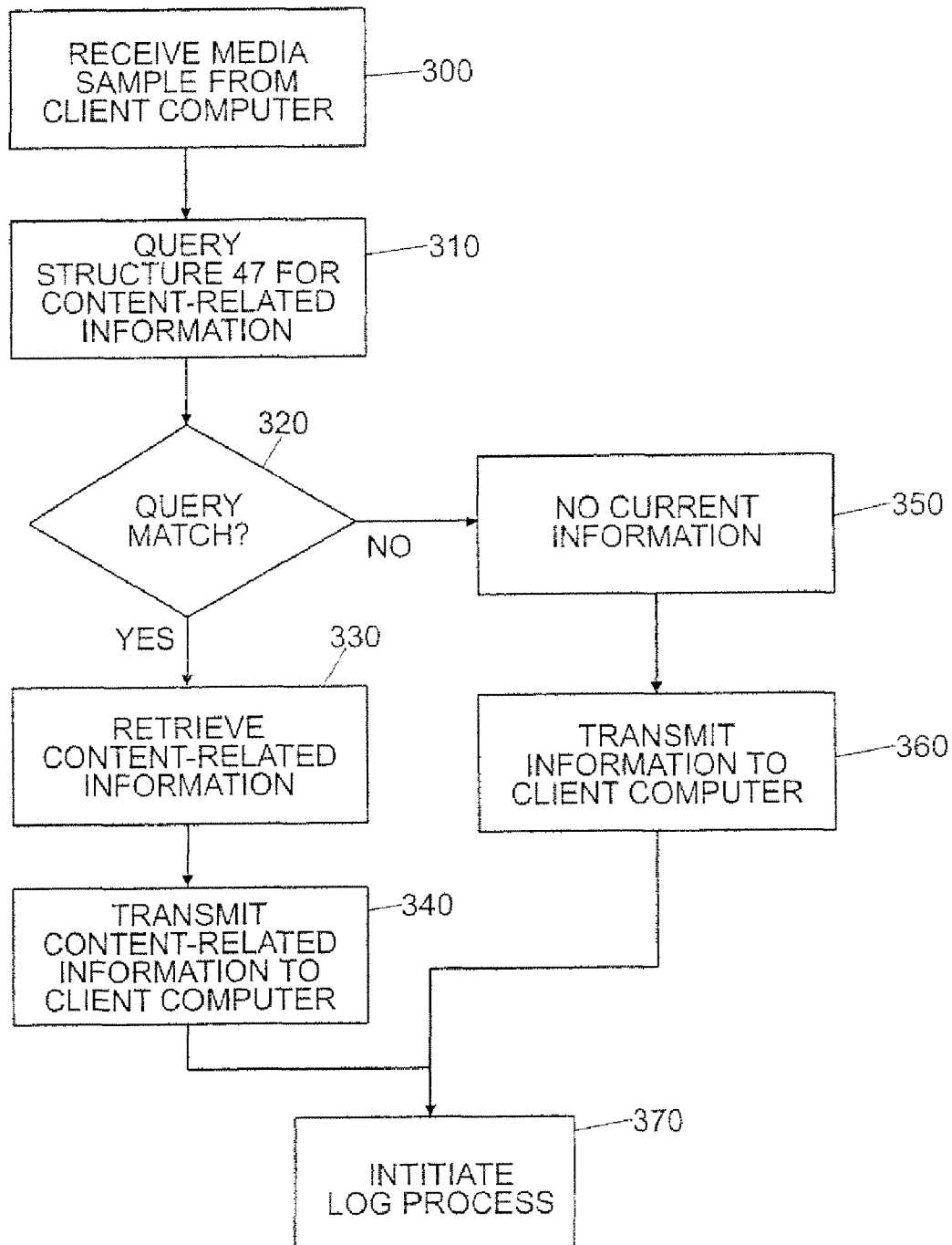


FIG. 5

**METHOD AND APPARATUS FOR
IDENTIFYING MEDIA CONTENT
PRESENTED ON A MEDIA PLAYING DEVICE**

RELATED APPLICATIONS

This application is a continuation of U.S. patent application Ser. No. 10/955,841, filed on Sep. 29, 2004, now U.S. Pat. No. 7,500,007 which is a continuation of U.S. patent application Ser. No. 09/511,632, filed on Feb. 17, 2000, now U.S. Pat. No. 6,834,308, and assigned to the assignee of the present application and hereby incorporated by reference.

BACKGROUND OF THE INVENTION

1. Field of the Invention

This invention pertains generally to media content identification methods. More particularly, the invention is an apparatus and method for identifying media content presented on a media playing device and presenting media-content related information and/or action to the user of the media playing device.

2. The Prior Art

The use of a data processing means, such as a computer or personal digital assistant (PDA), for playing works is well known. For purposes of the present discussion, a work is anything that is fixed in a tangible medium. Some examples of works include, but are not limited to, audio renderings, video renderings, images, video/audio renderings, and software. An example of an audio rendering is a song or other audio track. Examples of video renderings include animation or video sequence. Examples of an image include photographs and paintings. Examples of audio/video renderings include movies, television shows, and cartoons. Examples of software include word processing programs and video games.

Some examples of playing a work include using a personal computer (PC) to play songs from audio compact disks (CD), normally with the use of a CD-ROM drive, a sound card, and speakers. Other types of media, including various formats of audio and video, are also commonly played using a PC.

With the increasing popularity of the global information network commonly known as the "Internet", various audio and video formats have been introduced to provide live (as well as archived) broadcasts of works over the Internet. These broadcasts may be viewed by users connected to the Internet with the use of a PC and the proper client application. For example, Real Networks™ provides Real Player™ (a client application) for playing streaming audio and video works (in Real™ format) which is broadcast over the Internet. Various servers (also connected to the Internet) carry out the operation of making such works available and streaming data for the appropriate works to users upon request. In this way, Real™ media content of the work may be played by a user using Real Player™ on the user's PC. Like other media client applications, Real Player™ plays audio content of a work via the user's sound card and speakers and video content of a work via the user's video card and monitor (or other viewing device).

Internet radio broadcasts (or webcasts) are also known in the art. In general, Internet radio broadcasts are provided over the Internet by one or more server computers equipped to provide streaming audio works, much like traditional AM or FM radio broadcast. A user that would like to listen to an Internet radio broadcast would use a client application (such as Real Player™, Microsoft™ media player, or Apple Quick-Time™ viewer, for example) and direct the client application to the appropriate server computer. The server computer then

transmits the media content of a work to the client application via the Internet. The client application receives the media content of the work transmitted from the server computer and plays the content of the work using the user's sound card and speaker.

Internet video broadcasts (another form of webcast) are carried out in a similar fashion to that of Internet radio broadcasts, except video broadcasts typically contain both audio and video content of a work. As such, the audio component of the work is played to the user via a sound card and speakers, while the video component of the work is displayed using a video card and a monitor.

In many cases, webcasts will not provide content identifying information, such as song title, artist name or album name, as part of a broadcast work. Other information, such as where the content of the work can be purchased in the form of a CD, DVD (digital video disk) or VHS (video home system) tape, for example, are also typically not included. The primary reason a webcast provider (station) fails to provide such content-related information of the work is that the station does not have real-time access to accurate playlists. For example, it is common for a station disk jockey to make real-time adjustments to the playlist order and timing. Thus current radio station systems do not transmit or attach identification data of a work with the broadcast.

In addition to webcasts, many Internet sites provide archived or pre-recorded works for download and playback on a user's PC. Examples of such content of works include "wav", "mp3", "mov", and "midi" files, among others. Once these files have been downloaded from the Internet site to the user's PC, the user is able to play back the audio or video content of a work using an appropriate client application. Many of these media files, like webcasts, also fail to provide identifying data or other information for a work.

Additionally, PCs often have the ability to play other forms of media content for other works via PC sound card and speakers and/or PC video card and monitor. For example, tuner expansion cards (tuners) which may be inserted into (or interfaced with) a user's PC are presently available (some computers already include such tuners). In either case, "television" (TV) tuners allow a user of the PC to view conventional television, cable or satellite transmissions on the PC monitor and hear the audio via the PC speaker. "Radio" tuners allow a user to hear conventional (FM or AM) radio broadcast using the PC speaker. Conventional TV and radio broadcast also fail to provide rich content-related information of a work to the user.

Other media playing devices such as televisions, radio/stereo systems, and portable audio devices also typically do not provide content-related information of a work on demand for the user. For example, in automobiles, current car stereo systems fail, to provide a system and method for identifying a song being played on the stereo. Typically a user would either rely on the disk jockey to identify the artist and song title or call the radio station to ascertain the information.

Users may also read and/or store media content of works from storage mediums such as compact disk and magnetic tapes. Sometimes these copies of works do not include metadata or the metadata for the work may be incorrect. Furthermore, there may be no proper way to identify the work.

Accordingly, there is a need for an apparatus and method which provides real-time media content-related information of a work and context specific action choices to users viewing and/or listening to media content of the work over media playing devices. The present invention satisfies these needs, as well as others, and generally overcomes the deficiencies found in the background art.

BRIEF DESCRIPTION OF THE INVENTION

The present invention is a system and method for identifying a work from media content presented over a media playing device, such as a computer. The system generates a media sample or analytical representation from the media content of the work, such as audio and/or video, played on the media player. The media sample or representation is compared to a database of samples of media content or representations of known works to query and ascertain content-related information related to the work. This media content-related information of the work is then displayed on the media player.

The invention further relates to machine readable media which are stored embodiments of the present invention. It is contemplated that any media suitable for retrieving instructions is within the scope of the present invention. By way of example, such media may take the form of magnetic, optical, or semiconductor media. The invention also relates to data structures that contain embodiments of the present invention, and to the transmission of data structures containing embodiments of the present invention.

By way of example only, and not of limitation, the media player may comprise any data processing means or computer executing the present invention including devices carrying out the invention via an embedded system. For example, the media player may comprise cellular or mobile phones, portable media players, and fixed media players including analog broadcast receivers (such as car stereo, home stereos, and televisions, for example).

In a first embodiment, the database of media content samples of known works resides on a "lookup server" which carries out the database query described above. In general, the lookup server is operatively coupled for communication to one or more media players (client) via the Internet as is known in the art. Under this arrangement, media samples of works are first communicated from the client to the lookup server before the media samples are compared to the database. Then after the database query is carried out on the lookup server, the content-related information of the work is transmitted to the client for presentation thereon.

According to this embodiment, the system of the present invention generally includes one or more client media players, each operatively coupled for communication to a lookup server. As noted above, the lookup server is generally connected to the client media players via an Internet connection, although any suitable network (including wired or wireless) connection may also be used.

For example, the client media player may comprise a computer. The client computer typically plays audio files via a sound card and speakers. Video files are played via a video card, and a monitor. The client computer has executing thereon a "client engine" software application comprising a sampling unit, a media intercept unit (intercept unit), and a user-interface.

By way of example, and not of limitation, the intercept unit carries out the operation of monitoring the client computer for media content of a work presented thereon. In general, the intercept unit carries out the operation of monitoring audio signals transmitted to the sound card and/or video signals transmitted to the video card. The intercept unit may also monitor the operations of other hardware suitable for communicating audio and/or video signals, such as USB (universal serial bus) and IEEE (Institute of Electrical and Electronics Engineers) standard 1394 connections, for example. Preferably, the intercept unit maintains a FIFO (first in first out) buffer of fixed size (150 seconds, for example) containing media content played on the client.

The sampling unit carries out the operation of creating a media sample from the media content of a work played on the client computer in order to represent and identify the work. In general, the sampling unit creates a sample of the work, from the FIFO buffer maintained by the intercept unit. The sampling unit may create media samples from the media content of a work according to a predetermined or user-defined interval or upon the request of the user of the client computer. A user request may be received via commands issued using the user-interface. In general, the media sample created by the sampling unit comprises a "digital fingerprint" or "digital signature" using conventional, digital signal processing known in the art. For example, a sound file may be sampled according to its acoustic/perceptual features over time. It is noted that "media sample" is defined herein to include actual recordings of the media content and/or analytical representations of the media content of the work. One example of such a digital signal processing technique for creating a media sample is described in U.S. Pat. No. 5,918,223 issued to Blum which is hereby incorporated by reference as if set forth in its entirety. Other examples of methods for creating media samples are given in PCT application number WO200444820 having inventors Jin S. Seo, Jaap A. Haitma and Antonius A. C. M. Kalker and assigned to Koninklijke Philips Electronics and PCT application number WO03091990 having inventors Daniel Culbert and Avery Li-Chun Wang and assigned to Shazam Entertainment, Ltd. The media sample is then transmitted to the lookup server for further processing, as described in further detail below.

The user interface carries out the operation of receiving commands from a user of the client computer, and displaying content-related information to the user. As noted above, a user may issue a request for content-related information via the user-interface. This request is communicated to the sampling unit for further processing. As described above, in response to this request, the sampling unit creates a sample of the media content being played on the client computer and transmits the sample to the lookup server for further processing, in response, the lookup server provides the information related to the media sample to the client computer. This content-related information is received by the user interface which then displays the received information to the user of the client computer.

The content-related information for the work returned from the lookup server may also be used for a plurality of purposes including, for example, generating a log of the user activity, providing an option to purchase media to the user, and displaying the content-related information on the media playing device, among others.

The lookup server has executing thereon a "server engine" software application comprising a lookup unit, and a log unit. The lookup unit is further coupled to a media database, and the log unit is coupled to a log database. While the present invention describes the lookup server as a single machine, a group or cluster of server machines may be used to carry out the tasks of the lookup server described herein to thereby balance the load between several machines as is known in the art.

The lookup unit carries out the operation of receiving media samples of the work from client computers and performing database queries on the media database to ascertain content information, related to the media sample provided. This content-related information of the work may include such information as song title, artist, and album name, for example. The content-related information of the work may also include product fulfillment information, such as how and where to purchase media containing the work, advertising

banners, and/or promotional offers, for example, This content-related information of the work, is transmitted back to the client computer for further processing thereon.

The log unit carries out the operation of tracking media requests made by the users of the client computers to the lookup server. The log unit maintains a plurality of information related to the requests made by the user including, for example, media type, genre or category. This user information is maintained in the log database.

The source of the media content of the work played on the client computer includes conventional media sources such as Internet sources or webcasts, including streaming media and archived media. The media content source may also be audio CDs, DVD, or other formats suitable for presentation on media playing devices, such as the client computer.

In a second embodiment of the present invention, the database of sampled media content resides within the client computer. The database resides on conventional storage medium, such as a computer memory, a hard drive, CD-ROM, or other appropriate storage medium. Under this arrangement, the database query is carried out "locally" on the computer playing the media content. It will be readily apparent to those skilled in the art that various other topological arrangements of the system elements (including the location of the database) may be used with the invention without departing from the scope and spirit of the invention.

An object of the invention is to provide an apparatus and method for identifying media content presented over a media playing device which overcomes the deficiencies of the prior art.

Another object of the invention is to provide an apparatus and method for identifying media content presented over a media playing device which does not require the media content provider to provide content-related information.

Further objects and advantages of the invention will be brought out in the following portions of the specification, wherein the detailed description is for the purpose of fully disclosing the preferred embodiment of the invention without placing limitations thereon.

BRIEF DESCRIPTION OF THE DRAWINGS

The present invention will be more fully understood by reference to the following drawings, which are for illustrative purposes only.

FIG. 1 is a functional block diagram of a media content identifying system in accordance with the invention.

FIG. 2 is a functional block diagram of a media content identifying system having a plurality of client nodes in accordance with the invention.

FIG. 3 is a flow chart showing generally the processes associated with the client engine in accordance with the invention.

FIG. 4 is flow chart showing generally the processes associated with the media intercept unit in accordance with the invention.

FIG. 5 is flow chart showing generally the processes associated with the server engine in accordance with the invention.

DETAILED DESCRIPTION OF THE PREFERRED EMBODIMENTS

Persons of ordinary skill in the art will realize that the following description of the present invention is illustrative only and not in any way limiting. Other embodiments of the

invention will readily suggest themselves to such skilled persons having the benefit of this disclosure.

Referring more specifically to the drawings, for illustrative purposes the present invention is embodied in the apparatus shown FIG. 1 and FIG. 2 and the method outlined in FIG. 3 through FIG. 5. It will be appreciated that the apparatus may vary as to configuration and as to details of the parts, and that the method may vary as to details and the order of the acts, without departing from the basic concepts as disclosed herein. The invention is disclosed generally in terms of an apparatus and method for identification of a work on a personal computer, although numerous other uses for the invention will suggest themselves to persons of ordinary skill in the art.

Referring first to FIG. 1, there is generally shown a functional block diagram of a media content identifying system 10 in accordance with the invention. The system 10 comprises a lookup server 12 and at least one client media player 14. The lookup server 12 can be any standard data processing means or computer, including a minicomputer, a microcomputer, a UNIX® machine, a mainframe machine, a personal computer (PC) such as INTEL® based processing computer or clone thereof, an APPLE® computer or clone thereof or, a SUN® workstation, or other appropriate computer. Lookup server 12 generally includes conventional computer components (not shown), such as a motherboard, central processing unit (CPU), random access memory (RAM), hard disk drive, display adapter, other storage media such as diskette drive, CD-ROM, flash-ROM, tape drive, PCMCIA cards and/or other removable media, a monitor, keyboard, mouse and/or other user interface means, a modem, and/or other conventional input/output devices. Lookup server 12 also includes a Network Interface 17 for communication with other computers using an appropriate network protocol.

Lookup server 12 has loaded in its RAM a conventional server operating system (not shown) such as UNIX®, WINDOWS® NT, NOVELL®, SOLARIS®, or other server operating system. Lookup server 12 also has loaded in its RAM server engine software 16, which is discussed in more detail below.

Client media player 14, may comprise a standard computer such as a minicomputer, a microcomputer, a UNIX® machine, mainframe machine, personal computer (PC) such as INTEL®, APPLE®, or SUN® based processing computer or clone thereof, or other appropriate computer. As such, client media player 14 is normally embodied in a conventional desktop or "tower" machine, but can alternatively be embodied in a portable or "laptop" computer, a handheld personal digital assistant (PDA), a cellular phone capable of playing media content, a dumb terminal playing media content, a specialized device such as Tivo® player, or an internet terminal playing media content such as WEBTV®, among others. As described above, client media player 14 may also comprise other media playing devices such as a portable stereo system, fixed stereo systems, and televisions suitable for use with embedded systems carrying out the operations of the client engine as described further below.

Client media player 14 also includes typical computer components (not shown), such as a motherboard, central processing unit (CPU), random access memory (RAM), hard disk drive, other storage media such as diskette drive, CD-ROM, flash-ROM, tape drive, PCMCIA cards and/or other removable media, keyboard, mouse and/or other user interface means, a modem, and/or other conventional input/output devices.

Client media player 14 also has loaded in RAM an operating system (not shown) such as UNIX®, WINDOWS® XP or

the like. Client media player **14** further has loaded in RAM a media client application program **18** such as Real Player™, Windows™ Media Player, Apple Quicktime™ Player, or other appropriate media client application for playing audio and/or video via client media player **14**. Client media player **14** also has loaded in its RAM client engine software **30**, which is discussed in more detail below.

Client media player **14** further includes a conventional sound card **20** connected to speakers **22**. As is known in the art, the media client application **18** will generally play audio signals through the sound card device **20** and speakers **22**. For example, audio streams, audio files, audio CDs, and other audio sources are communicated from the client application **18** to the sound card **20** for output. The sound card **18** then produces the audio signal via speakers **22**.

Client media player **14** also includes a conventional video card **24** connected to a display means **26**. As is known in the art, the media client **18** will generally play video content through the video card **24**, which then produces an appropriate video signal suitable for display on the display means **26**. The display means **26** may be a standard monitor, LCD, or other appropriate display apparatus. Client media player **14** also includes a Network Interface **28** for communication with other computers using an appropriate network protocol. The network interface **28** may comprise a network interface card (NIC), a modem, ISDN (Integrated Services Digital Network) adapter, ADSL (Asynchronous digital, subscriber line) adapter or other suitable network interface.

Client media player **14** is networked for communication with lookup server **12**. Typically, client media player **14** is operatively coupled to communicate with lookup server **12** via an Internet connection **32** through a phone connection using a modem and telephone line (not shown), in a standard fashion. The user of client media player **14** will typically dial the user's Internet service provider (ISP) (not shown) through the modem and phone line to establish a connection between the client media player **14** and the ISP, thereby establishing a connection between the client media player **14** and the Internet **32**. Generally, lookup server **12** is also connected to the Internet **32** via a second ISP (not shown), typically by using a fast data connection such as T1, T3, multiple T1, multiple T3, or other conventional data connection means (not shown). Since computers connected to the Internet are themselves connected to each other, the Internet **32** establishes a network communication between client media player **14** and server **12**. One skilled in the art will recognize that a client may be connected to any type of network including but not limited to a wireless network or a cellular network. Generally, client media player **14** and lookup server **12** communicate using the IP (internet protocol). However, other protocols for communication may also be utilized, including PPTP, NetBEUI over TCP/IP, and other appropriate network protocols.

Client media player **14** and server **12** can alternatively connect to the Internet **32** using a network means, wireless means, satellite means, cable means, infrared means or other means for establishing a connection to the Internet, as alternatives to telephone line connection. Alternative means for networking client media player **14** and server **12** may also be utilized, such as a direct point to point connection using modems, a local area network (LAN), a wide area network (WAN), wireless connection, satellite connection, direct port to port connection utilizing infrared, serial, parallel, USB, Fire Wire/IEEE-1394, ISDN, DSL and other means known in the art.

In general, client engine **30** is a software application executing within the client media player **14**. However, client engine **30** may also be an embedded system carrying out the

functions described herein and suitable for use with various media player platforms. Client engine **30** comprises a sampling unit **34**, an intercept unit **36**, and a user interface **38**.

The intercept unit **36** carries out the operation of monitoring the client media player **14** for media content of a work presented thereon, typically by media client application **18**, but may be from any media source. In operation, the intercept unit **36** monitors audio signals transmitted from the media client **18** to the sound card **20** and/or video signals transmitted from the media client **18** to the video card **24**. The intercept unit **36** may also monitor the operations of other hardware (not shown) suitable for communicating audio and/or video signals, such as USB, IEEE standard 1394 connections, and analog input devices (such as microphones). For example, in a media player comprising a mobile stereo system, the intercept unit **36** intercepts the audio signal played on thereon.

Preferably, the intercept unit **36** maintains a FIFO (first in first out) buffer **40** of fixed size (150 seconds, for example) for storing media content of a work played on the client media player **14**, and from which media samples of the work are created by sampling unit **34**. The operation of the intercept unit is further described below in conjunction with FIG. 4.

The sampling unit **34** carries out the operation of creating a media sample from the media content of a work played on the client media player **14**. In operation, the sampling unit **34** creates a media sample from the FIFO buffer **40** maintained by the intercept unit **36**. The sampling unit **34** may create media samples according to a predetermined or user-defined interval or upon the request of user of the client media player **14**. For example, user requests may be received via commands issued using the user-interface **38**.

As noted above, the media sample created by the sampling unit **34** typically comprises a "digital fingerprint" using conventional digital signal processing known in the art. For example, a sound file may be sampled according to its acoustic/perceptual features over time. One example of such a digital signal processing technique is described in U.S. Pat. No. 5,918,223 issued to Blum which is hereby incorporated by reference as if set forth in its entirety. Other examples are described in PCT application number WO200444820 having inventors Jin S. Seo, Jaap A. Haitma and Antonius A. C. M. Kalker and assigned to Koninklijke Philips Electronics and PCT application number WO03091990 having inventors Daniel Culbert and Avery Li-Chun Wang and assigned to Shazam Entertainment, Ltd. The media sample generated by sampling unit **34** is then transmitted to the lookup server **12** for further processing, as described in further detail below.

The user interface **38** carries out the operation of receiving commands from a user of the client media player **14**, and displaying content-related information to the user. The user interface **38** may be any conventional interfaces including, for example, a graphical user interface (GUI), a command line user interface (CLUI), a voice recognition interface, a touch screen interface, a momentary contact switch on a stereo system, or other appropriate user interface.

In operation, a user may issue a request for content-related information via the user-interface **38**. This request is communicated to the sampling unit **34** for further processing. As described above, in response to such a request, the sampling unit **34** creates a media sample from the media content of a work being played on the client media player **14** and transmits the sample to the lookup server **12** for further processing. In response, the lookup server **12** provides the information related to the work, if available, to the client media player. This content-related information of the work is received by the user interface **38** which then displays the received information to the user of the client media player **14**.

The server engine 16 is a software application executing within the lookup server 12. Server engine 16 comprises a lookup unit 42 and a log unit 44. Lookup unit 42 is operatively coupled for communication with a media database 46. Log unit 44 is operatively coupled for communication with a log database 48.

The lookup unit 42 carries out the operation of receiving media samples from the client media player 14 and comparing the media samples to a collection of samples of the media content of known works (reference samples). The collection of reference samples of known works will typically reside in an in-memory structure (designated 47). Upon initialization of the lookup unit 42, the collection of reference samples of known works from the media database 46 is stored in the in-memory structure 47.

The lookup unit 42 sequentially compares each reference sample of known works in structure 47 to the media sample provided by the media player 14. The lookup unit will cut a media sample of the received work into a series of overlapping frames, each frame the exact size of the particular reference sample under examination. The lookup unit 42 will then compare the reference sample to every possible "frame" of information within the media samples of the known works and compute a "distance" between each frame and the reference sample. This process repeats for each reference sample. The reference sample which has the smallest distance to any frame in the sample is considered for a match. If this distance is below a predefined threshold, a match is considered to be found.

When a match is determined, the information related to the matching record of the known work is returned to the client media player for presentation thereon. This content-related information of a work, may include such information as song title, artist, and album name, for example. The content-related information may also include product fulfillment information, such as how and where to purchase media containing the media sample, advertising banners, and/or promotional offers, for example. This content-related information of the work is transmitted back to the client media player 14 for further processing thereon.

The log unit 44 carries out the operation of tracking media requests made by the users of the client media player 14 to the lookup server 12. The log unit 44 maintains a plurality of information related to the requests made by the user including, for example, media type, genre or category. This user information is maintained in the log database 48.

Media database 46 and log database 48 comprise conventional relational database storage facilities. Thus, media database 46 may comprise one or more tables (not shown) for storing data associated with the media content samples of known works and related content-specific information (song name, title, album name, etc.) of the known works. In general, another computer (not shown) may be connected to the lookup server 12 for entering the content-specific media information into the media database 46. Log database 46 may comprise one or more tables (not shown) for storing data associated with users and the user's related media content requests.

Referring now to FIG. 2, there is generally shown a functional block diagram of a media content identifying system 50 having a plurality of client nodes in accordance with the invention.

System 50 comprises a lookup server 54 operatively coupled for communication with a plurality of client media players 52a through 52n via Internet connection 32. System 50 operates in substantially the same manner as system 10 described above. That is, lookup server 54 operates in the

same manner as lookup server 12, and clients 52a through 52n operate in the same manner as client media player 14. However, in system 50, lookup server 12 handles a plurality of media sample identification requests from the client 52a through 52n.

As depicted in FIG. 2, clients 52a through 52n communicate with lookup server 54 using the HTTP (hypertext transfer protocol) over IP. Although http is used in the example, one skilled in the art will recognize that any suitable protocol may be used. More particularly, the media sample signal generated by each client 52a through 52n is wrapped using a transport protocol before being transmitted over HTTP to lookup server 54 for processing. When lookup server 54 receives the HTTP transmission from the client media player, a transport protocol converts ("unwraps") the signal for processing therein by the server engine. Likewise, before transmitting content-related information retrieved from the media database to the appropriate client media player, the information is first wrapped using the transport protocol. The content-related information may be communicated using "XML" tags, or other appropriate programming, scripting, or markup language. The appropriate client media player upon receiving the transmission from the lookup server 54 unwraps the signal for processing therein by the client engine.

The method and operation of the invention will be more fully understood by reference to the flow charts of FIG. 3 through FIG. 5. The order of acts as shown in FIG. 3 through FIG. 5 and described below are only exemplary, and should not be considered limiting.

Referring now to FIG. 3, as well as FIG. 1 and FIG. 2, there is shown the processes associated with the client engine 30 in accordance with the invention. As described above, the client engine 30 is a software application or embedded system operating within a client media player for identifying media content played via the client media player.

At process 100, the client engine 30 is initiated. The client engine 30 may be initiated by the user of client media player 14 or may initiate automatically upon the recognition of media content being played via the sound card 20 and/or the video card 24. Box 110 is then carried out.

At box 110, the intercept unit 36 is initiated. As described above, the intercept unit 36 carries out the operation of monitoring media content of a work played on client media player 34 (typically via sound card 20 and/or video card 24). The processes of the intercept unit 36 are described more fully below in conjunction with FIG. 4. After the Intercept unit 36 is initiated, box 120 is then carried out.

At box 120, a user request for media information is received via user interface 38. This request is communicated from the user interface 38 to the sampling unit 34 for further processing. Box 130 is then carried out.

At box 130, the sampling unit 34 creates a media sample from the media data of a work contained in the FIFO buffer 40. The media sample created by the sampling unit 34 comprises a "digital fingerprint" using conventional digital signal processing known in the art. As noted above, a sound file may be sampled according to its acoustic/perceptual features over time. Box 140 is then carried out.

At box 140, the sampling unit 34 transmits the media sample created from box 130 to the lookup server 12 for content identification and content-related information. In the illustrative system depicted in FIG. 1 and FIG. 2, the media sample is first wrapped in a transport protocol and then communicated over IP (HTTP) via network interface 28. Box 150 is then carried out.

At box 150, the client media player 14 receives from the lookup server 12 the content-related information of the work

requested in box 140. The process for generating the content-related information by the lookup server 12 is described in further detail below in conjunction with FIG. 5. This content data is first received via the network interface 28, unwrapped using the appropriate transport protocol and then communicated to the client engine 30. In the client engine 30, the user interface 38 receives the content-related information, and parses the data according to the appropriate format (XML tags, for example) transmitted by the lookup server 12. Box 160 is then carried out.

At box 160, the user interface 38 presents the content-related information of the work to the user via video card 24 and display 26, or other display device such as an LCD screen, or standard broadcast television. As described above, this content-related information of the work may include such information as song title, artist, and album name, for example. The content-related information of the work may also include product fulfillment information, such as how and where to purchase media containing the media sample, advertising banners, and/or promotional offers, for example.

Referring now to FIG. 4, there is generally shown the processes associated with the media intercept unit 36 in accordance with the invention. In general, the media intercept unit 36 maintains a FIFO buffer of predetermined size (150 seconds, for example) of media content played via client media player 14, 52a through 52n.

At process 200, the intercept unit 36 is initiated. This is carried out from box 110 of FIG. 3, during the start up of the client engine software 30. Box 210 is then carried out.

At box 210, the intercept unit 36 monitors the media hardware devices of the client media player 14. As described above, the media hardware devices may comprise a sound card 20 and/or a video card 24. Other hardware devices suitable for playing media content are also monitored by the intercept unit 36. Diamond 220 is then carried out.

At diamond 220, the intercept unit 36 determines whether any media hardware devices are playing media content of a work. If the intercept unit 36 determines that media content is currently being played, diamond 230 is carried out. Otherwise box 210 is repeated.

At diamond 230, the intercept unit 36 determines whether the FIFO buffer 40 is currently full. If the buffer is determined to be full, box 240 is carried out. Otherwise, box 250 is carried out.

At box 240, the intercept unit 36 has determined that all the buffer 40 is full and deletes the older sample in the buffer. As noted above, the FIFO buffer 40 is commonly configured with a predetermined size. For example, if the sampling rate is 22 KHz (HiloHertz), the oldest $1/22000^{\text{th}}$ of a second sample would be deleted, and the newest $1/22,000^{\text{th}}$ of a second sample would be added to the buffer. Using this method, the intercept unit 36 is able to maintain the most recent one hundred fifty (150) seconds of media content of a work played via client media player 14. Box 250 is then carried out.

At box 250, the intercept unit 36 stores the media content of the work currently being played on client media player 14 into the FIFO buffer 40. Box 210 is then repeated to continue monitoring media hardware devices.

Referring now to FIG. 5, there is generally shown the processes associated with the server engine 16 and the lookup server 12 in accordance with the invention. It is noted that the lookup server 12 is structured and configured to handle a plurality of requests from a plurality of client media players as depicted in FIG. 2 above.

Prior to box 300 as described below, the in-memory structure 47 is populated with reference media samples of known works. Upon initialization of the lookup unit 42, the collec-

tion of reference samples from the media database 46 is stored in the in-memory structure 47.

At box 300, the lookup server 12 receives a media sample request from one of the client media players 14, 52a through 52n. As described above, such requests are generally communicated over an Internet connection 32, although any suitable network connection may also be used. The request is first received via network interface 17 via the IP (HTTP) protocol or other suitable protocol. An appropriate transport protocol unwraps the message and communicates the request to the server engine 16 for processing. Box 310 is then carried out.

At box 310, the lookup unit 42 sequentially compares each reference sample of the known works in structure 47 to the media sample of the work provided by the media player 14, 52a through 52n, as described above. The lookup unit will cut the media sample into a series of overlapping frames, each frame the exact size of the particular reference sample under examination. The lookup unit 42 will then compare the reference sample to every possible "frame" of information within the media sample and compute a "distance" between each frame and the reference sample. This process repeats for each reference sample. Diamond 320 is then carried out.

At diamond 320, the lookup unit 42 determines whether a match was obtained. As noted above, the reference sample of the known work which has the smallest distance to any frame in the sample is considered for a match. If the distance is below a predefined threshold, a match is considered to be found. If a match is determined, box 330 is then carried out. Otherwise box 350 is carried out.

At box 330, the media sample from box 300 matches a corresponding record in the media database 46, and the lookup unit 42 retrieves the content-related information of the known work associated with the matching record in the media database 46. As noted above, this content-related information may include such information as song title, artist, album name, for example as well as other information such as product fulfillment information such as a sponsor or an advertiser. Box 340 is then carried out.

At box 340, the content-related information of the known work obtained in box 330 is transmitted to the client media player submitting the media sample request in box 300. In the preferred embodiment, this transmission is carried out over the Internet using the IP (HTTP) protocol or other suitable protocol. Box 370 is then carried out to generate a log.

At box 350, the lookup unit 42 has determined that the media sample of the work from box 300 does not match any reference sample in the in-memory structure 47. Box 360 is then carried out.

At box 360, a notice indicating that the requested information is not available is transmitted to the requesting client media player of box 300. Box 370 is then carried out.

At box 370 the log process is initiated. This log process involves tracking the user and related-media information associated with the request of box 300. The log unit 44 maintains a plurality of information related to the requests made by the user including, for example, media type, genre or category. This user information is maintained in the log database 48 and may be used for various marketing strategies, including analyzing user behavior, for example.

Accordingly, it will be seen that this invention provides an apparatus and method which provides real-time media content-related information to users viewing media content over a personal computer, or other data processing means. Although the description above contains many specificities, these should not be construed as limiting the scope of the invention but as merely providing an illustration of the presently preferred embodiment of the invention. Thus the scope

13

of this invention should be determined by the appended claims and their legal equivalents.

The invention claimed is:

1. A method for identifying a work from media content on a media device comprising:

creating an analytical representation from a segment of media content of said work on said media device, the work being a single rendering, and the segment being a portion of said media content that is less than an entirety of the work, wherein said analytical representation is a digital fingerprint of perceptual features of said segment;

transmitting said analytical representation to a lookup server for comparison to a collection of analytical representations of reference sampled media content of known works, each analytical representation being associated with content-related data of a known work;

receiving content-related data of said work from said server, wherein the content-related data was identified based on the comparison; and

presenting said content-related data on said media device.

2. The method of claim 1, further comprising:

receiving a user-initiated command to identify said media content before creating an analytical representation of a segment of said media content.

3. The method of claim 1, further comprising:

generating a log of user activity based on the content-related data; and

offering for purchase at least one of a product or a service related to said content-related data based on said log.

4. The method of claim 1, wherein said media device is at least one of a portable media player or a mobile phone.

5. The method of claim 1, further comprising:

receiving the media content via at least one of a microphone or a video camera.

6. The method of claim 1, wherein the single rendering is at least one of an audio rendering or a video rendering.

7. The method of claim 6, wherein said audio rendering is one of a song, a musical audio track or a nonmusical audio track, and wherein said video rendering is one of an animation sequence or a video sequence.

8. The method of claim 1, wherein the perceptual features include acoustical features.

9. The method of claim 1, further comprising:

receiving a media stream that includes the media content.

10. A non-transitory machine-readable medium including instructions that, when executed by a processing system, cause the processing system to perform a method of identifying a work from media content on a media device, comprising:

creating an analytical representation from a segment of media content of said work on said media device, the work being a single rendering, and the segment being a portion of the media content that is less than an entirety of the work, wherein said analytical representation is a digital fingerprint of perceptual features of said segment;

transmitting said analytical representation to a server for comparison to a collection of analytical representations of reference sampled media content of known works, each analytical representation being associated with content-related data of a known work;

receiving content-related data of said work from said server, wherein the content-related data was identified based on the comparison; and

presenting said content-related data of said work on said media device.

14

11. The non-transitory machine-readable medium of claim 10, wherein the perceptual features include acoustical features.

12. The non-transitory machine-readable medium of claim 10, the method further comprising:

receiving a media stream that includes the media content.

13. The non-transitory machine-readable medium of claim 10, the method further comprising:

generating a log of user activity based on the content-related data; and

offering for purchase at least one of a product or a service related to said content-related data based on said log.

14. The non-transitory machine-readable medium of claim 10, wherein said media device is at least one of a portable media player or a mobile phone.

15. The non-transitory machine-readable medium of claim 10, the method further comprising:

receiving the media content via at least one of a microphone or a video camera.

16. A media device comprising:

an interrupt unit configured to monitor the media device for media content of a work presented thereon, wherein said work is a single rendering;

a sampling unit configured to generate an analytical representation from a segment of media content of said work presented on said media device and to transmit said analytical representation to a lookup server, wherein said segment is a portion of said media content that is less than an entirety of the work, and the analytical representation is a digital fingerprint of perceptual features of said segment; and

a user interface configured to receive content information related to said work from said lookup server and present said content information.

17. The media device of claim 16, wherein said user interface is further configured to receive user-requests from a user of said media device, said sampling unit further configured to generate said analytical representation upon receipt of said user request.

18. The media device of claim 16, wherein said media device receives a media stream that includes said media content, wherein said media content includes at least one of audio content or video content.

19. The media device of claim 16, further comprising:

a log generating unit to generate a log of user activity based on the content-related data;

wherein the user interface is further configured to offer for purchase at least one of a product or a service related to said content-related data based on said log.

20. The media device of claim 16, wherein said media device is at least one of a portable media player or a mobile phone.

21. The media device of claim 16, wherein the interrupt unit is configured to monitor at least one of a microphone or a video camera for media content.

22. A lookup server comprising:

a collection of stored analytical representations of reference sampled media content of known works, each stored analytical representation being associated with corresponding content-specific information, wherein each stored analytical representation is a digital fingerprint of perceptual features of data of one of said known works; and

a lookup unit coupled to said collection of stored analytical representations of reference sampled media content of known works, said lookup unit configured to receive an analytical representation created from a segment of

15

media content of said presented work, the presented work being a single rendering, and the segment being a portion of said media content that is less than an entirety of the presented work, and compare said received analytical representation with said collection of stored analytical representations to ascertain content information related to said received analytical representation, said lookup unit further configured to transmit said content information to said media device.

23. The lookup server of claim 22, wherein the single rendering is at least one of an audio rendering or a video rendering, and wherein the single rendering was received by the media device via a media stream.

24. The lookup server of claim 22, further comprising: an advertising unit to receive from the media device a log of user activity that is based on the content-related data, and to transmit to the media device an offer for purchase of at least one of a product or a service related to said content-related data based on said log.

25. A method for identifying a work from media content comprising:

receiving, from a media device, an analytical representation created from a segment of media content of said work on said media device, the work being a single rendering, and the segment being a portion of said media content that is less than an entirety of the work, wherein said analytical representation is a digital fingerprint of perceptual features of said segment;

comparing said analytical representation to a collection of analytical representations of reference sampled media content of known works to obtain content-related data of said work from said collection of analytical representations of reference sampled media content; and transmitting said content-related data of said work to said media device.

26. The method of claim 25, wherein the single rendering is at least one of an audio rendering or a video rendering, and wherein the single rendering was received by the media device via a media stream.

16

27. The method of claim 25, further comprising: receiving from the media device a log of user activity that is based on the content-related data; and transmitting to the media device an offer for purchase of at least one of a product or a service related to said content-related data based on said log.

28. A non-transitory machine-readable storage medium including instructions that, when executed by a processing system, cause the processing system to perform a method of identifying a work from media content, said method comprising:

receiving, from a media device, an analytical representation created from a segment of media content of said work on said media device, the work being a single rendering, and the segment being a portion of said media content that is less than an entirety of the work, wherein said analytical representation is a digital fingerprint of perceptual features of said segment;

comparing said analytical representation to a collection of analytical representations of reference sampled media content of known works to obtain content-related data of said work from said collection of analytical representations of reference sampled media content; and transmitting said content-related data of said work to said media device.

29. The non-transitory machine-readable storage medium of claim 28, wherein the single rendering is at least one of an audio rendering or a video rendering, and wherein the single rendering was received by the media device via a media stream.

30. The non-transitory machine-readable storage medium of claim 28, the method further comprising: receiving from the media device a log of user activity that is based on the content-related data; and transmitting to the media device an offer for purchase of at least one of a product or a service related to said content-related data based on said log.

* * * * *